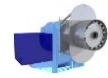




# 400 V

**DUO-BLOCK DUAL FUEL LOW NOX GAS & MODULATING LIGHT FUEL OIL BURNER**  
OIL 100% Modulating



Type	Boiler capacity (93% eff)			Burner Input		Control		Gas pressure		Max boiler backpressure		Motor / drive power		Turn down		Consumption			Max. Height		Gas	Power
	kCal	HP	kW	kW	MMBTU	Gas	Oil	mbar	PSI	mbar	"wc	kW	HP	Gas	Oil	Gas m3	Gas F3	Oil(kg/h)	metr	ft		
VG0ls-100	1.000.000	-	1163	1250	-	Modulating	Modulating	100-300	-	10	-	2,2	-	1:5	1:5	142	-	105	500	1640	NG**	3x400V/50Hz***
VG0ls-150	1.500.000	-	1745	1875	-	Modulating	Modulating	100-300	-	10	-	4,0	-	1:5	1:5	213	-	158	500	1640	NG**	3x400V/50Hz***
VG0ls-200	2.000.000	-	2326	2500	-	Modulating	Modulating	100-300	-	10	-	4,0	-	1:5	1:5	284	-	210	500	1640	NG**	3x400V/50Hz***
VG0ls-250	2.500.000	-	2908	3125	-	Modulating	Modulating	100-300	-	10	-	5,5	-	1:5	1:5	355	-	262	500	1640	NG**	3x400V/50Hz***
VG0ls-300	3.000.000	-	3489	3750	-	Modulating	Modulating	100-300	-	12	-	7,5	-	1:6	1:5	426	-	315	500	1640	NG**	3x400V/50Hz***
VG0ls-350	3.500.000	-	4071	4375	-	Modulating	Modulating	100-300	-	12	-	7,5	-	1:6	1:5	487	-	368	500	1640	NG**	3x400V/50Hz***
VG0ls-400	4.000.000	-	4652	5000	-	Modulating	Modulating	100-300	-	12	-	11,0	-	1:6	1:5	568	-	420	500	1640	NG**	3x400V/50Hz***
VG0ls-450	4.500.000	-	5234	5625	-	Modulating	Modulating	100-300	-	12	-	11,0	-	1:6	1:5	629	-	472	500	1640	NG**	3x400V/50Hz***
VG0ls-500	5.000.000	-	5815	6250	-	Modulating	Modulating	100-300	-	12	-	15,0	-	1:7	1:5	710	-	525	500	1640	NG**	3x400V/50Hz***
VG0ls-600	6.000.000	-	6978	7500	-	Modulating	Modulating	100-300	-	13	-	18,5	-	1:7	1:5	852	-	630	500	1640	NG**	3x400V/50Hz***
VG0ls-700	7.000.000	-	8141	8750	-	Modulating	Modulating	200-300	-	14	-	22	-	1:8	1:5	994	-	735	500	1640	NG**	3x400V/50Hz***
VG0ls-800	8.000.000	-	9294	10000	-	Modulating	Modulating	300	-	15	-	30	-	1:8	1:5	1136	-	840	500	1640	NG**	3x400V/50Hz***
VG0ls-1000	10.000.000	-	11630	12500	-	Modulating	Modulating	300	-	15	-	37	-	1:10	1:5	1420	-	1090	500	1640	NG**	3x400V/50Hz***
VG0ls-1250	12.000.000	-	13956	15000	-	Modulating	Modulating	300	-	15	-	45	-	1:10	1:5	1704	-	1261	500	1640	NG**	3x400V/50Hz***
VG0ls-1500	15.000.000	-	17448	18750	-	Modulating	Modulating	300	-	15	-	55	-	1:10	1:5	2130	-	1576	500	1640	NG**	3x400V/50Hz***
VG0ls-1500	16.000.000	-	18884	20000	-	Modulating	Modulating	300	-	15	-	75	-	1:10	1:5	2772	-	1884	500	1640	NG**	3x400V/50Hz***
VG0ls-1500	17.000.000	-	20356	22000	-	Modulating	Modulating	300	-	15	-	90	-	1:12	1:5	3485	-	1849	500	1640	NG**	3x400V/50Hz***
VG0ls-1500	19.000.000	-	22100	24000	-	Modulating	Modulating	300	-	15	-	110	-	1:12	1:5	2698	-	2017	500	1640	NG**	3x400V/50Hz***
VG0ls-1500	21.500.000	-	25010	27000	-	Modulating	Modulating	300	-	15	-	131	-	1:12	1:5	3953	-	2269	500	1640	NG**	3x400V/50Hz***