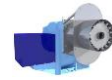




# 575 V

MONO-BLOCK DUAL FUEL LOW NOX GAS & EMERGENCY BACK-UP LIGHT FUEL OIL BURNER  
OIL 80% Two stage



Type	Boiler capacity (93% eff)			Burner Input		Control		Gas pressure		Max boiler backpressure		Motor / drive power		Turn down		Consumption			Max. Height		Gas	Power
	kCal	HP	kW	kW	MMBTU	Gas	Oil	mbar	PSI	mbar	”wc	kW	HP	Gas	Oil	Gas m3	Gas fl3	Oil(kg/h)	mtr	ft		
VGOIs-100	1,000,000	119	1163	1250	4	Modulating	Two stage	100-300	1,45-4,35	10	4,0	2,2	3,0	1,5	1,2	142	5015	84	500	1640	NG**	3x575V/60Hz***
VGOIs-150	1,500,000	178	1745	1875	6	Modulating	Two stage	100-300	1,45-4,35	10	4,0	4,0	5,4	1,5	1,2	213	7522	126	500	1640	NG**	3x575V/60Hz***
VGOIs-200	2,000,000	237	2336	2500	9	Modulating	Two stage	100-300	1,45-4,35	10	4,0	4,0	5,4	1,5	1,2	284	10029	168	500	1640	NG**	3x575V/60Hz***
VGOIs-250	2,500,000	296	2908	3125	11	Modulating	Two stage	100-300	1,45-4,35	10	4,0	5,5	7,5	1,5	1,2	355	12537	210	500	1640	NG**	3x575V/60Hz***
VGOIs-300	3,000,000	356	3489	3750	13	Modulating	Two stage	100-300	1,45-4,35	12	4,8	7,5	10,2	1,6	1,2	426	15044	252	500	1640	NG**	3x575V/60Hz***
VGOIs-350	3,500,000	415	4071	4375	15	Modulating	Two stage	100-300	1,45-4,35	12	4,8	7,5	10,2	1,6	1,2	487	17198	294	500	1640	NG**	3x575V/60Hz***
VGOIs-400	4,000,000	474	4652	5000	17	Modulating	Two stage	100-300	1,45-4,35	12	4,8	11,0	15,0	1,6	1,2	568	20059	336	500	1640	NG**	3x575V/60Hz***
VGOIs-450	4,500,000	534	5234	5625	19	Modulating	Two stage	100-300	1,45-4,35	12	4,8	11,0	15,0	1,6	1,2	639	22566	378	500	1640	NG**	3x575V/60Hz***
VGOIs-500	5,000,000	593	5815	6250	21	Modulating	Two stage	100-300	1,45-4,35	12	4,8	15,0	20,4	1,7	1,2	710	25073	420	500	1640	NG**	3x575V/60Hz***
VGOIs-600	6,000,000	711	6978	7500	26	Modulating	Two stage	100-300	1,45-4,35	13	5,2	18,5	25,2	1,7	1,2	852	30088	504	500	1640	NG**	3x575V/60Hz***
VGOIs-700	7,000,000	830	8141	8750	30	Modulating	Two stage	200-300	2,90-4,35	14	5,6	22	29,9	1,8	1,2	994	35103	588	500	1640	NG**	3x575V/60Hz***
VGOIs-800	8,000,000	948	9304	10000	34	Modulating	Two stage	300	4,35	15	6,0	36	40,8	1,8	1,2	1136	40117	672	500	1640	NG**	3x575V/60Hz***
VGOIs-1000	10,000,000	1186	11630	12500	43	Modulating	Two stage	300	4,35	15	6,0	37	50,4	1,10	1,2	1420	50147	840	500	1640	NG**	3x575V/60Hz***
VGOIs-1250	12,000,000	1423	13956	15000	51	Modulating	Two stage	300	4,35	15	6,0	45	61,2	1,10	1,2	1704	60176	1008	500	1640	NG**	3x575V/60Hz***