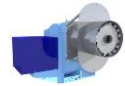




# 575 V

MONO-BLOCK TRI FUEL LOW NOX NATURALGAS & PROPANEGAS & MODULATING LIGHT FUEL OIL BURNER



Type	Boiler capacity (93% eff)			Burner Input		Control		Gas pressure		Max boiler backpressure		Motor / drive power		Turn down		Consumption			Max. Height		Gas	Power
	kCal	HP	kW	kW	MMBTU	Gas	Oil	mbar	PSI	mbar	"wc	kW	HP	Gas	Oil	Gas m3	Gas fl3	Oil(kg/h)	mtr	ft		
VG01s-100	1.000.000	119	1163	1250	4	Modulating	Modulating	100-300	1,45-4,35	10	4,0	2,2	3,0	1:5	1:5	142	5015	105	500	1640	NG/LPG**	3x575V/60Hz***
VG01s-150	1.500.000	178	1745	1875	6	Modulating	Modulating	100-300	1,45-4,35	10	4,0	4,0	5,4	1:5	1:5	213	7522	158	500	1640	NG/LPG**	3x575V/60Hz***
VG01s-200	2.000.000	237	2326	2500	9	Modulating	Modulating	100-300	1,45-4,35	10	4,0	4,0	5,4	1:5	1:5	284	10029	210	500	1640	NG/LPG**	3x575V/60Hz***
VG01s-250	2.500.000	296	2908	3125	11	Modulating	Modulating	100-300	1,45-4,35	10	4,0	5,5	7,5	1:5	1:5	355	12537	263	500	1640	NG/LPG**	3x575V/60Hz***
VG01s-300	3.000.000	356	3489	3750	13	Modulating	Modulating	100-300	1,45-4,35	12	4,8	7,5	10,2	1:6	1:5	426	15044	315	500	1640	NG/LPG**	3x575V/60Hz***
VG01s-350	3.500.000	415	4071	4375	15	Modulating	Modulating	100-300	1,45-4,35	12	4,8	7,5	10,2	1:6	1:5	487	17198	368	500	1640	NG/LPG**	3x575V/60Hz***
VG01s-400	4.000.000	474	4652	5000	17	Modulating	Modulating	100-300	1,45-4,35	12	4,8	11,0	15,0	1:6	1:5	568	20059	420	500	1640	NG/LPG**	3x575V/60Hz***
VG01s-450	4.500.000	534	5234	5625	19	Modulating	Modulating	100-300	1,45-4,35	12	4,8	11,0	15,0	1:6	1:5	639	22566	473	500	1640	NG/LPG**	3x575V/60Hz***
VG01s-500	5.000.000	593	5815	6250	21	Modulating	Modulating	100-300	1,45-4,35	12	4,8	15,0	20,4	1:7	1:5	710	25073	525	500	1640	NG/LPG**	3x575V/60Hz***
VG01s-600	6.000.000	711	6978	7500	26	Modulating	Modulating	100-300	1,45-4,35	13	5,2	18,5	25,2	1:7	1:5	852	30088	630	500	1640	NG/LPG**	3x575V/60Hz***
VG01s-700	7.000.000	830	8141	8750	30	Modulating	Modulating	200-300	2,90-4,35	14	5,6	22	29,9	1:8	1:5	994	35103	735	500	1640	NG/LPG**	3x575V/60Hz***
VG01s-800	8.000.000	948	9304	10000	34	Modulating	Modulating	300	4,35	15	6,0	30	40,8	1:8	1:5	1136	40117	840	500	1640	NG/LPG**	3x575V/60Hz***
VG01s-1000	10.000.000	1186	11630	12500	43	Modulating	Modulating	300	4,35	15	6,0	37	50,4	1:10	1:5	1420	50147	1050	500	1640	NG/LPG**	3x575V/60Hz***
VG01s-1250	12.000.000	1423	13956	15000	51	Modulating	Modulating	300	4,35	15	6,0	45	61,2	1:10	1:5	1704	60176	1261	500	1640	NG/LPG**	3x575V/60Hz***